

Part: 1. MANAGEMENT

Chapter: 5. Organization chart

EASA REFERENCE No.
HU.145.0001

Page: 1/5

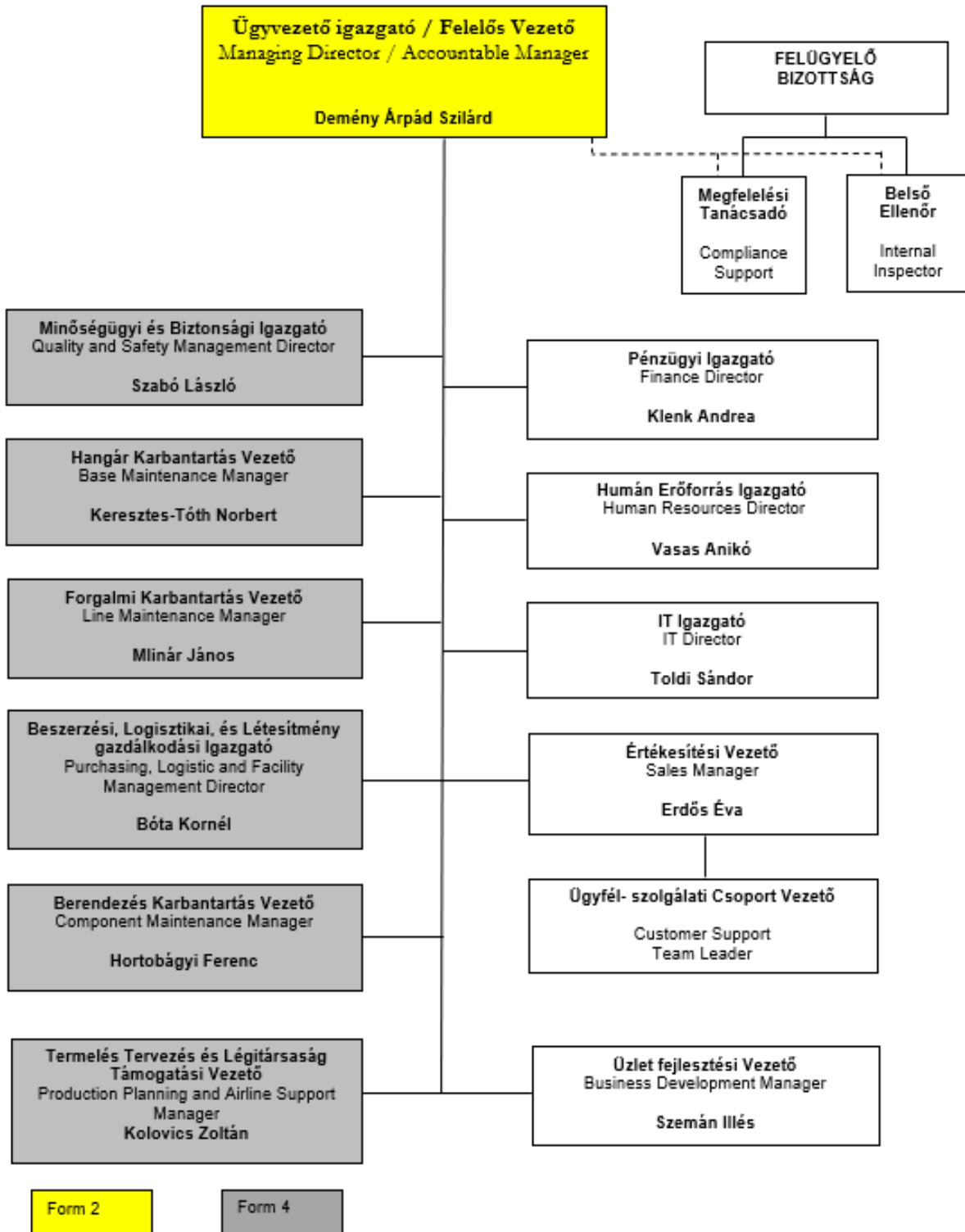
Closed: 01 MAR 2024.

Rev. No. 83.

Ref: Part 145.A30 (b) (c) / AMC 145.A.30 (b) 2 - Part 145.A.70 (a) 5

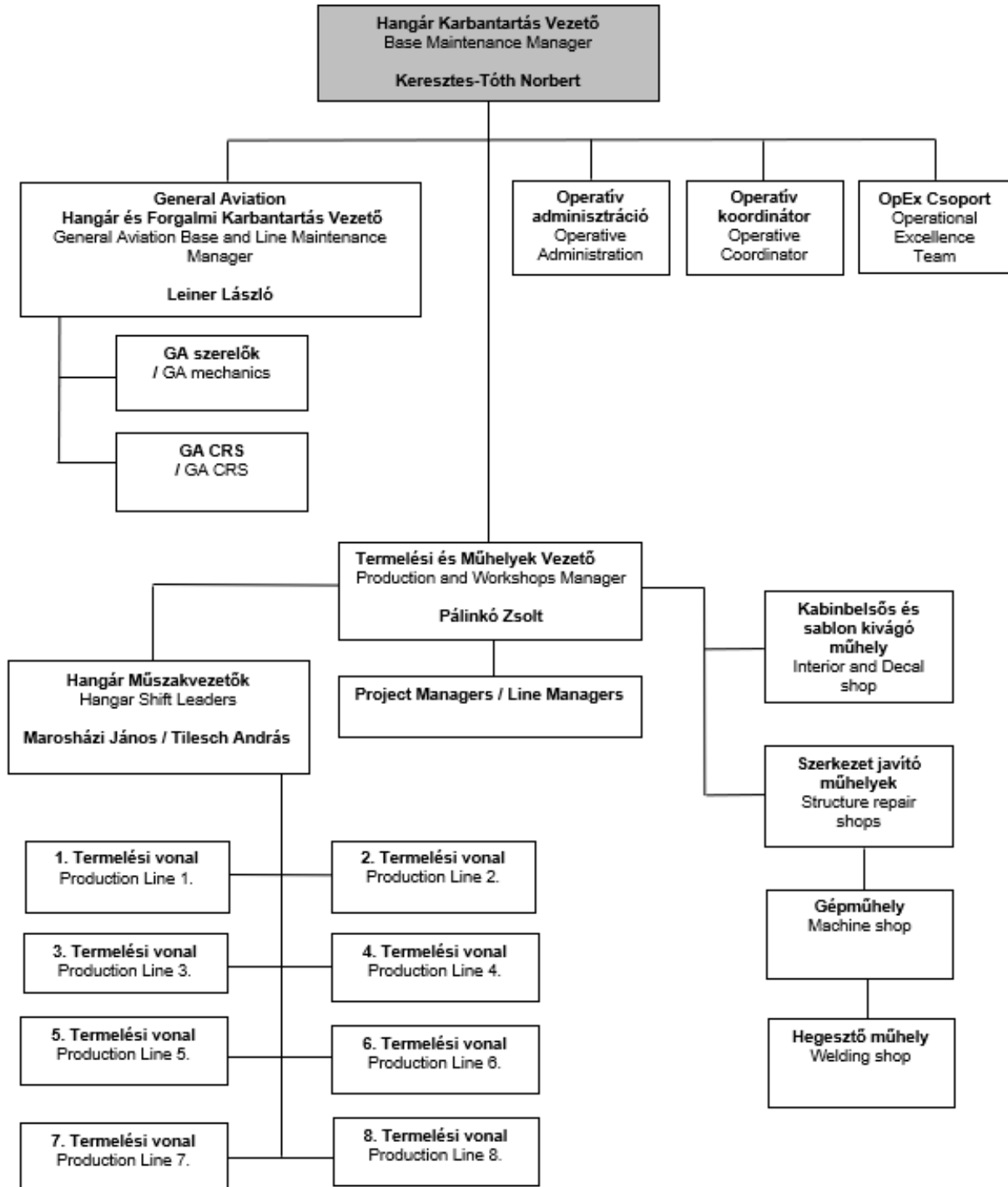
The Organization of ACE

Az ACE szervezeti felépítése



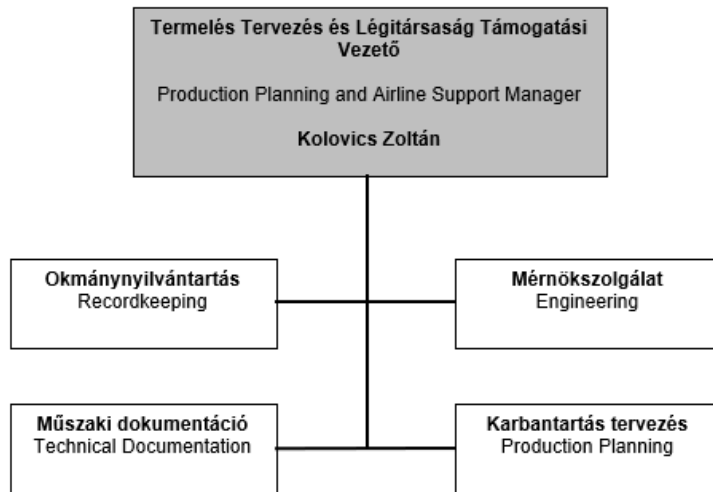
The Organisation of Base Maintenance

A Hangárkarbantartás szervezete



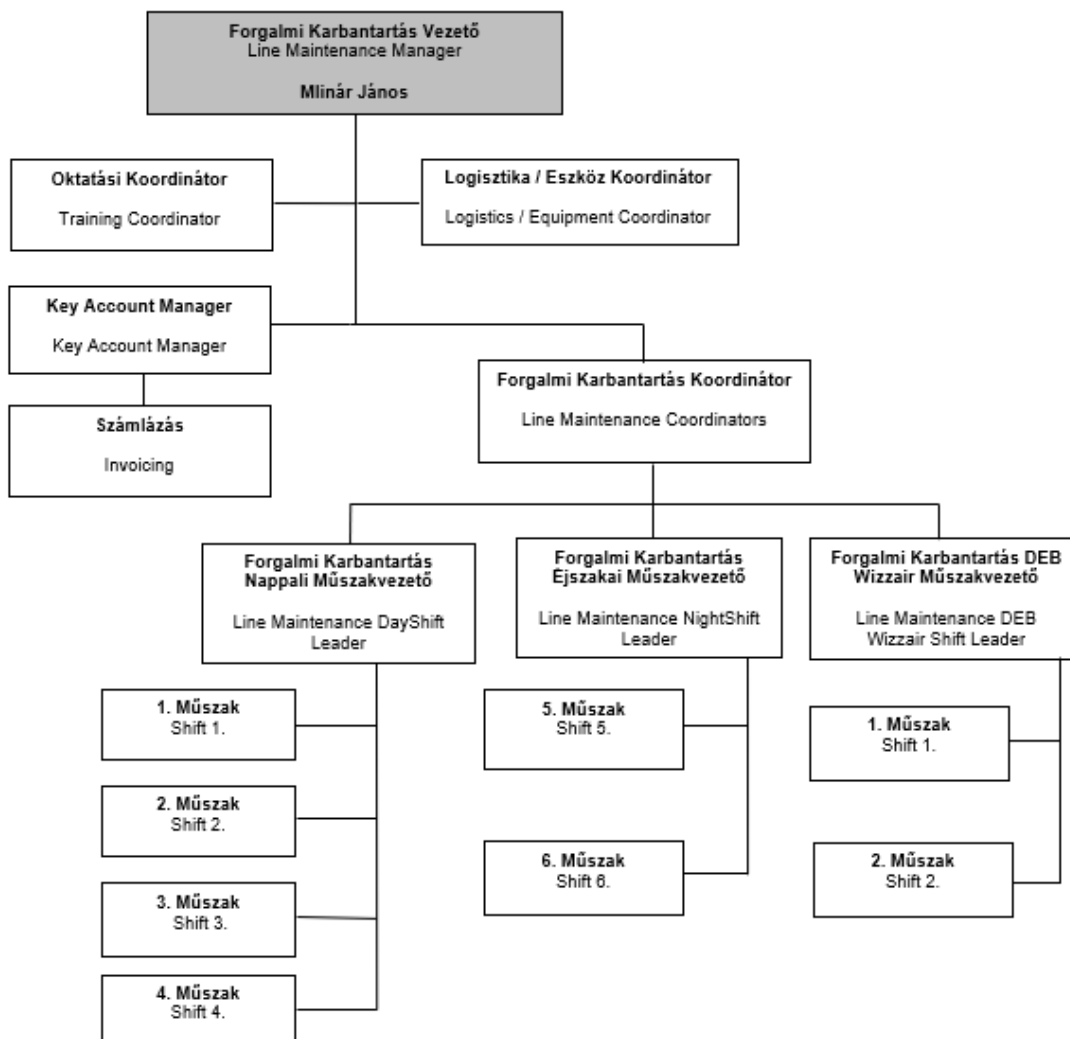
The Organisation of Production Planning

Termelés Tervezés szervezete



The Organisation of Line Maintenance

A Forgalmi Karbantartás szervezete



Part: 1. MANAGEMENT

Chapter: 5. Organization chart

EASA REFERENCE No.
HU.145.0001

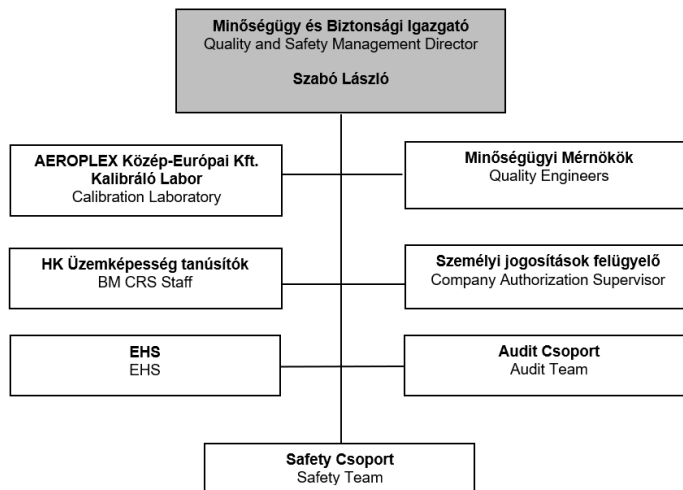
Page: 4/5

Closed: 01 MAR 2024.

Rev. No. 83.

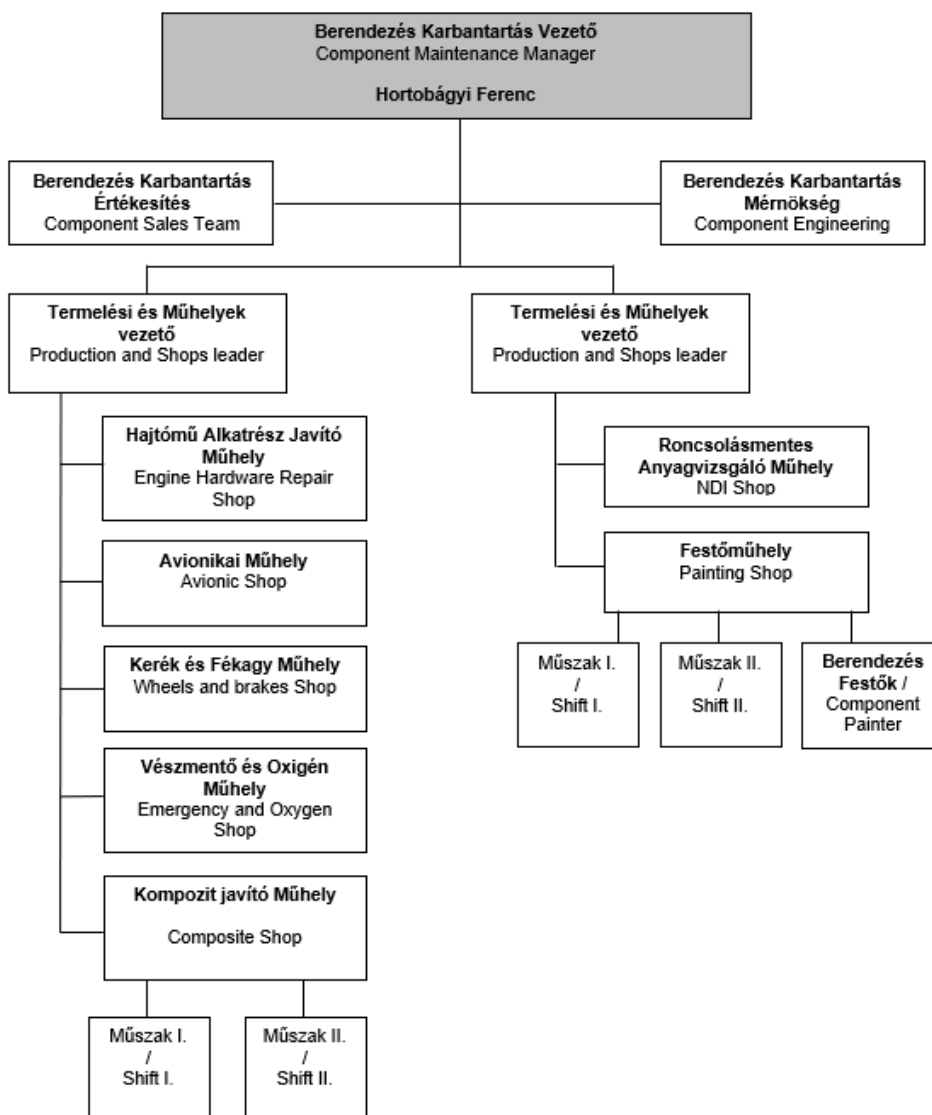
Quality's structure

Minőségügy szervezete



The Organisation of Component Maintenance

A Berendezés Karbantartás szervezete



Part: 1. MANAGEMENT

Chapter: 5. Organization chart

EASA REFERENCE No.
HU.145.0001

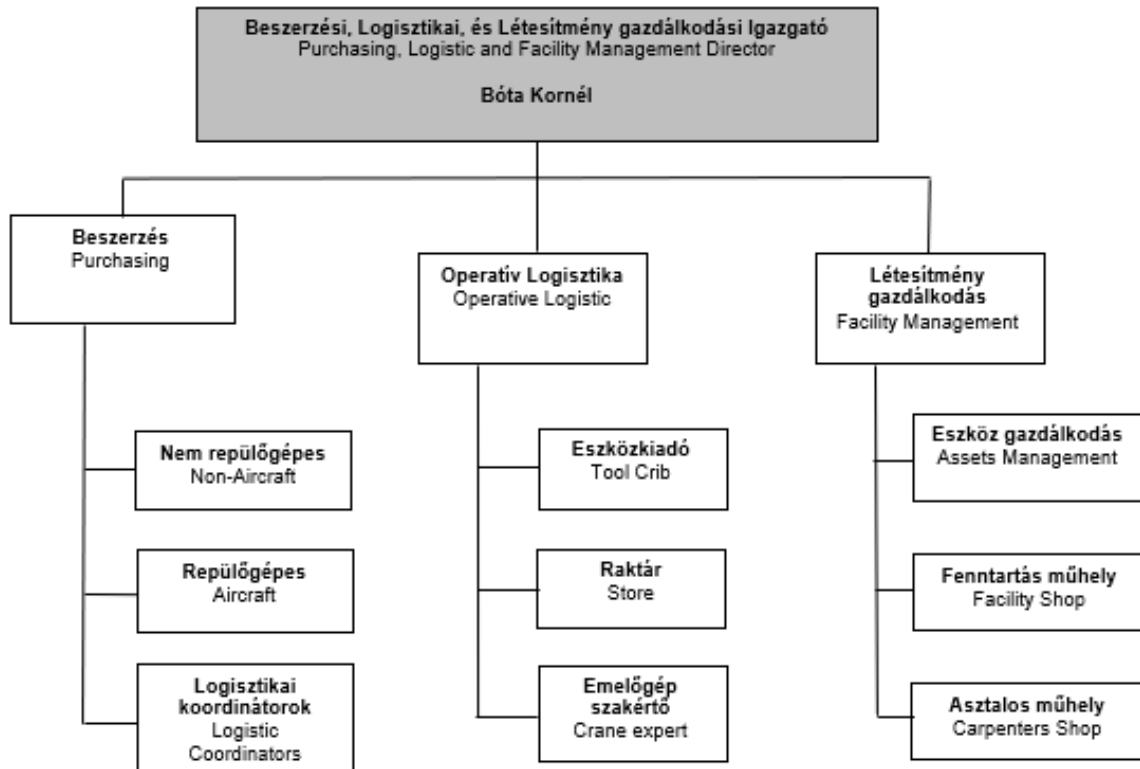
Page: 5/5

Closed: 01 MAR 2024.

Rev. No. 83.

Purchasing and Logistic and Facility structure

Beszerezési, Logisztikai és Létesítmény fenntartási szervezet



Human Resource structure

Humán Erőforrás szervezete

